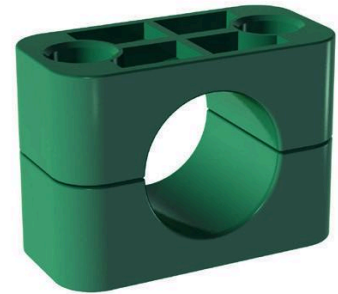
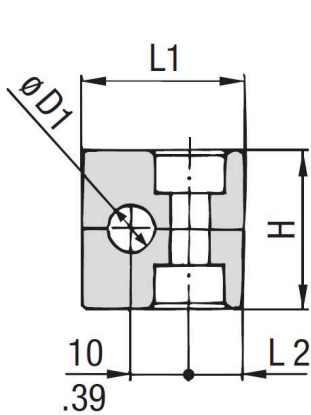


# Clamp Body Standard Series Smooth - Polypropylene

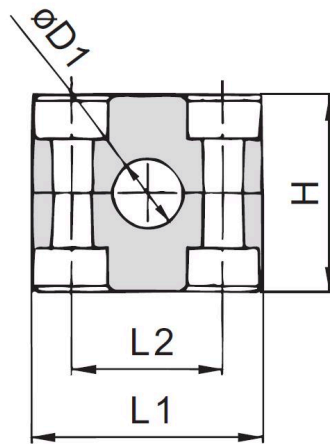


**Polypropylene**  
Color : Green  
Material Code : PP

- **Description :** Smooth clamp body (Ideal for flexible piping)
- **Series :** DIN 3015 (Standard Series)
- **Sizes :** 6 to 102 mm
- **Material :** Polypropylene
- **Brand :** STAUFF



**STAUFF Group 1**

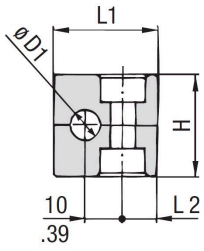


**STAUFF Group 1A to 8**

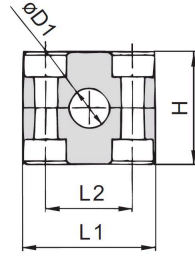
Selection table : Standard series smooth polypropylene clamp body

Code	Reference	Group		Outside Diameter Pipe / Tube Ø D1		Dimensions (mm/in)			
		STAUFF	DIN	(mm)	(in)	L1	L2	H	Width
PR#10890	106-PP-H	1	0	6		28	9,5	26	30
PR#10891	106.4-PP-H			6,4	1/4				
PR#10892	108-PP-H			8	5/16				
PR#10893	109.5-PP-H			9,5	3/8				
PR#10894	110-PP-H			10					
PR#10895	112-PP-H			12					
PR#10896	106A-PP-H	1A	1	6		37	20	26	30
PR#10897	106.4A-PP-H			6,4	1/4				
PR#10898	108A-PP-H			8	5/16				
PR#10899	109.5A-PP-H			9,5	3/8				
PR#10900	110A-PP-H			10					
PR#10901	112A-PP-H			12					

\*Red numbers indicate non-standard options.



STAUFF Group 1



STAUFF Group 1A to 8



**Polypropylene**  
Color : Green  
Material Code : PP

PR#IA066	212.7-PP-H			12,7	1/2				
PR#IA067	213.5-PP-H			13,5					
PR#IA068	214-PP-H			14					
PR#IA069	215-PP-H	2	2	15		42	26	32	30
PR#IA070	216-PP-H			16	5/8				
PR#IA071	217.2-PP-H			17,2					
PR#IA072	218-PP-H			18					
PR#IA073	319-PP-H			19	3/4				
PR#IA074	320-PP-H			20					
PR#IA075	321.3-PP-H	3	3	21,3		50	33	35,5	30
PR#IA076	322-PP-H			22	7/8				
PR#IA077	325-PP-H			25					
PR#IA078	325.4-PP-H			25,4	1				
PR#IA079	426.9-PP-H			26,9					
PR#IA080	428-PP-H	4	4	28		59	40	41,5	30
PR#IA081	430-PP-H			30					
PR#IA082	432-PP-H			32					
PR#IA083	532-PP-H			32	1-1/4				
PR#IA084	533.7-PP-H			33,7					
PR#IA085	535-PP-H			35					
PR#IA086	538-PP-H	5	5	38	1-1/2	71	52	56,5	30
PR#IA087	540-PP-H			40					
PR#IA088	542-PP-H			42					
PR#IA089	644.5-PP-H			44,5	1-3/4				
PR#IA090	648.3-PP-H	6	6	48,3		86	66	64,5	30
PR#IA091	650.8-PP-H			50,8	2				
PR#IA092	654-PP-H			54					
PR#IA093	757.2-PP-H			57,2	2-1/4				
PR#IA094	760.3-PP-H			60,3					
PR#IA095	763.5-PP-H	7	7	63,5	2-1/2	121	94	92	30
PR#IA096	770-PP-H			70	2-3/4				
PR#IA097	773-PP-H			73					
PR#IA098	776.1-PP-H			76,1	3				
PR#IA099	888.9-PP-H	8	8	88,9		147	120	116	30
PR#IA100	8102L-PP-H			102	4				

\*Red numbers indicate non-standard options.