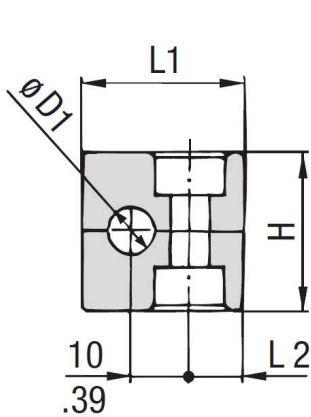


Corps de colliers Série standard lisse - Polypropylène

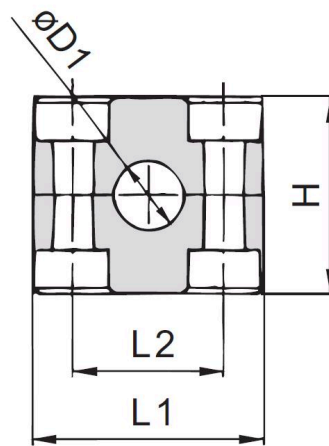


Polypropylène
Couleur : Vert
Code matériau : PP

- **Description** : Corps de colliers lisse (Idéal pour tuyauteries flexibles)
- **Série** : DIN 3015 (Série Standard)
- **Tailles** : De 6 à 102mm
- **Matière** : Polypropylène
- **Marque** : STAUFF



STAUFF Group 1

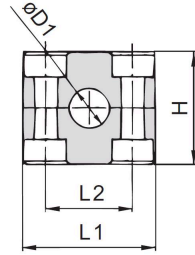
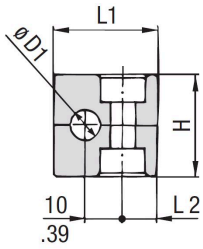


STAUFF Group 1A to 8

Tableau de sélection : Corps de colliers Série standard Polypropylène lisse sans serrage

| Code | Référence | Groupe | | Diamètre extérieur du tube / tuyau Ø D1 | | Dimensions (mm/in) | | | |
|----------|-------------|--------|-----|---|------|--------------------|-----|----|---------|
| | | STAUFF | DIN | (mm) | (in) | L1 | L2 | H | Largeur |
| | | | | | | | | | |
| PR#IA054 | 106-PP-H | 1 | 0 | 6 | | 28 | 9,5 | 26 | 30 |
| PR#IA055 | 106.4-PP-H | | | 6,4 | 1/4 | | | | |
| PR#IA056 | 108-PP-H | | | 8 | 5/16 | | | | |
| PR#IA057 | 109.5-PP-H | | | 9,5 | 3/8 | | | | |
| PR#IA058 | 110-PP-H | | | 10 | | | | | |
| PR#IA059 | 112-PP-H | | | 12 | | | | | |
| PR#IA060 | 106A-PP-H | 1A | 1 | 6 | | 37 | 20 | 26 | 30 |
| PR#IA061 | 106.4A-PP-H | | | 6,4 | 1/4 | | | | |
| PR#IA062 | 108A-PP-H | | | 8 | 5/16 | | | | |
| PR#IA063 | 109.5A-PP-H | | | 9,5 | 3/8 | | | | |
| PR#IA064 | 110A-PP-H | | | 10 | | | | | |
| PR#IA065 | 112A-PP-H | | | 12 | | | | | |

*Les valeurs indiquées en rouge correspondent aux options non standard.



Polypropylene
Couleur : Vert
Code matériau : PP

STAUFF Group 1

STAUFF Group 1A to 8

| | | | | | | | | | |
|----------|------------|---|---|------|-------|-----|-----|------|----|
| PR#IA066 | 212.7-PP-H | | | 12,7 | 1/2 | | | | |
| PR#IA067 | 213.5-PP-H | | | 13,5 | | | | | |
| PR#IA068 | 214-PP-H | | | 14 | | | | | |
| PR#IA069 | 215-PP-H | 2 | 2 | 15 | | 42 | 26 | 32 | 30 |
| PR#IA070 | 216-PP-H | | | 16 | 5/8 | | | | |
| PR#IA071 | 217.2-PP-H | | | 17,2 | | | | | |
| PR#IA072 | 218-PP-H | | | 18 | | | | | |
| PR#IA073 | 319-PP-H | | | 19 | 3/4 | | | | |
| PR#IA074 | 320-PP-H | | | 20 | | | | | |
| PR#IA075 | 321.3-PP-H | 3 | 3 | 21,3 | | 50 | 33 | 35,5 | 30 |
| PR#IA076 | 322-PP-H | | | 22 | 7/8 | | | | |
| PR#IA077 | 325-PP-H | | | 25 | | | | | |
| PR#IA078 | 325.4-PP-H | | | 25,4 | 1 | | | | |
| PR#IA079 | 426.9-PP-H | | | 26,9 | | | | | |
| PR#IA080 | 428-PP-H | 4 | 4 | 28 | | 59 | 40 | 41,5 | 30 |
| PR#IA081 | 430-PP-H | | | 30 | | | | | |
| PR#IA082 | 432-PP-H | | | 32 | | | | | |
| PR#IA083 | 532-PP-H | | | 32 | 1-1/4 | | | | |
| PR#IA084 | 533.7-PP-H | | | 33,7 | | | | | |
| PR#IA085 | 535-PP-H | | | 35 | | | | | |
| PR#IA086 | 538-PP-H | 5 | 5 | 38 | 1-1/2 | 71 | 52 | 56,5 | 30 |
| PR#IA087 | 540-PP-H | | | 40 | | | | | |
| PR#IA088 | 542-PP-H | | | 42 | | | | | |
| PR#IA089 | 644.5-PP-H | | | 44,5 | 1-3/4 | | | | |
| PR#IA090 | 648.3-PP-H | 6 | 6 | 48,3 | | 86 | 66 | 64,5 | 30 |
| PR#IA091 | 650.8-PP-H | | | 50,8 | 2 | | | | |
| PR#IA092 | 654-PP-H | | | 54 | | | | | |
| PR#IA093 | 757.2-PP-H | | | 57,2 | 2-1/4 | | | | |
| PR#IA094 | 760.3-PP-H | | | 60,3 | | | | | |
| PR#IA095 | 763.5-PP-H | 7 | 7 | 63,5 | 2-1/2 | 121 | 94 | 92 | 30 |
| PR#IA096 | 770-PP-H | | | 70 | 2-3/4 | | | | |
| PR#IA097 | 773-PP-H | | | 73 | | | | | |
| PR#IA098 | 776.1-PP-H | | | 76,1 | 3 | | | | |
| PR#IA099 | 888.9-PP-H | 8 | 8 | 88,9 | | 147 | 120 | 116 | 30 |
| PR#IA100 | 8102L-PP-H | | | 102 | 4 | | | | |

*Les valeurs indiquées en rouge correspondent aux options non standard.