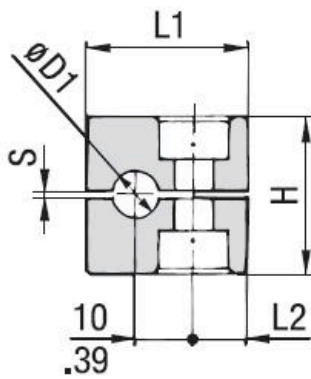


Clamp Body Standard Series Profiled - Polypropylene

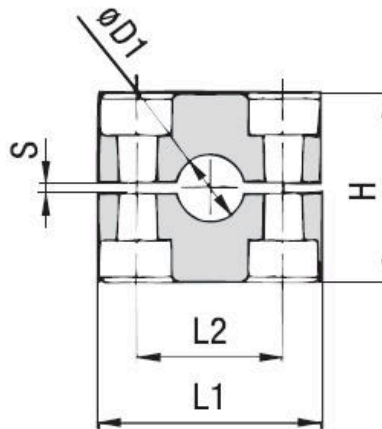


Polypropylene
Color : Green
Material Code : PP

- **Description :** Clamp body profiled (Ideal for rigid piping)
- **Series :** DIN 3015 (Standard Series)
- **Sizes :** 6 to 102 mm
- **Material :** Polypropylene
- **Brand :** STAUFF



STAUFF Group 1

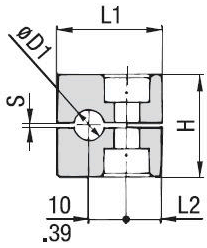


STAUFF Group 1A to 8

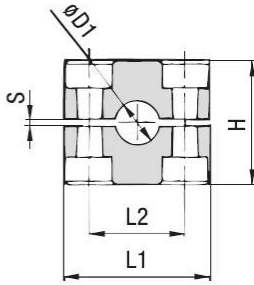
Selection table : Standard series clamp body profiled

Code	Reference	Group	Outside Diameter Pipe / Tube Ø D1	Nominal Bore	Dimensions (mm/in)						
					L1	L2	H	S min.	Width		
PR#IA001	106-PP	1	0	6		28	9,5	27	0,4	30	
PR#IA002	106.4-PP			6,4	1/4						
PR#IA003	108-PP			8	5/16						
PR#IA004	109.5-PP			9,5	3/8						1/4
PR#IA005	110-PP			10	1/8						
PR#IA006	112-PP			12							
PR#IA007	106A-PP			6							1A
PR#IA008	106.4A-PP	6,4	1/4								
PR#IA009	108A-PP	8	5/16								
PR#IA010	109.5A-PP	9,5	3/8	1/4							
PR#IA011	110A-PP	10	1/8								
PR#IA012	112A-PP	12									

*Red numbers indicate non-standard options.



STAUFF Group 1



STAUFF Group 1A to 8



Polypropylene
Color : Green
Material Code : PP

PR#IA013	212.7-PP	2	2	12,7	1/2		3/8	42	26	33	0,6	30
PR#IA014	213.5-PP			13,5		1/4						
PR#IA015	214-PP			14								
PR#IA016	215-PP			15								
PR#IA017	216-PP			16	5/8		1/2					
PR#IA018	217.2-PP			17,2		3/8						
PR#IA019	218-PP			18				50	33	36	0,6	30
PR#IA020	319-PP	19	3/4									
PR#IA021	320-PP	20										
PR#IA022	321.3-PP	21,3		1/2								
PR#IA023	322-PP	22	7/8		3/4							
PR#IA024	325-PP	25										
PR#IA025	325.4-PP	25,4	1					59	40	42	0,6	30
PR#IA026	426.9-PP	26,9		3/4								
PR#IA027	428-PP	28										
PR#IA028	428.6-PP	28,6			1							
PR#IA029	430-PP	30										
PR#IA030	432-PP	32										
PR#IA031	532-PP	32	1-1/4					71	52	58	0,8	30
PR#IA032	533.7-PP	33,7		1								
PR#IA033	535-PP	35			1-1/4							
PR#IA034	538-PP	38	1-1/2									
PR#IA035	540-PP	40										
PR#IA036	541.3-PP	41,3			1-1/2							
PR#IA037	542-PP	42		1-1/4				86	66	66	0,8	30
PR#IA038	644.5-PP	44,5	1-3/4									
PR#IA039	648.3-PP	48,3		1-1/2								
PR#IA040	650.8-PP	50,8	2									
PR#IA041	654-PP	54			2							
PR#IA042	757.2-PP	57,2	2-1/4									
PR#IA043	760.3-PP	60,3		2				121	94	93	0,8	30
PR#IA044	763.5-PP	63,5	2-1/2									
PR#IA045	770-PP	70	2-3/4									
PR#IA046	773-PP	73		2-1/2 (ANSI B 36-10)								
PR#IA047	776.1-PP	76,1	3	2-1/2 (DIN EN 10220)								
PR#IA048	888.9-PP	88,9		3								
PR#IA049	8102L-PP	102	4	3-1/2				147	120	118	0,8	30

*Red numbers indicate non-standard options.